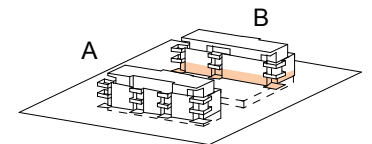
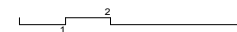




# Immeuble B rez de chaussée

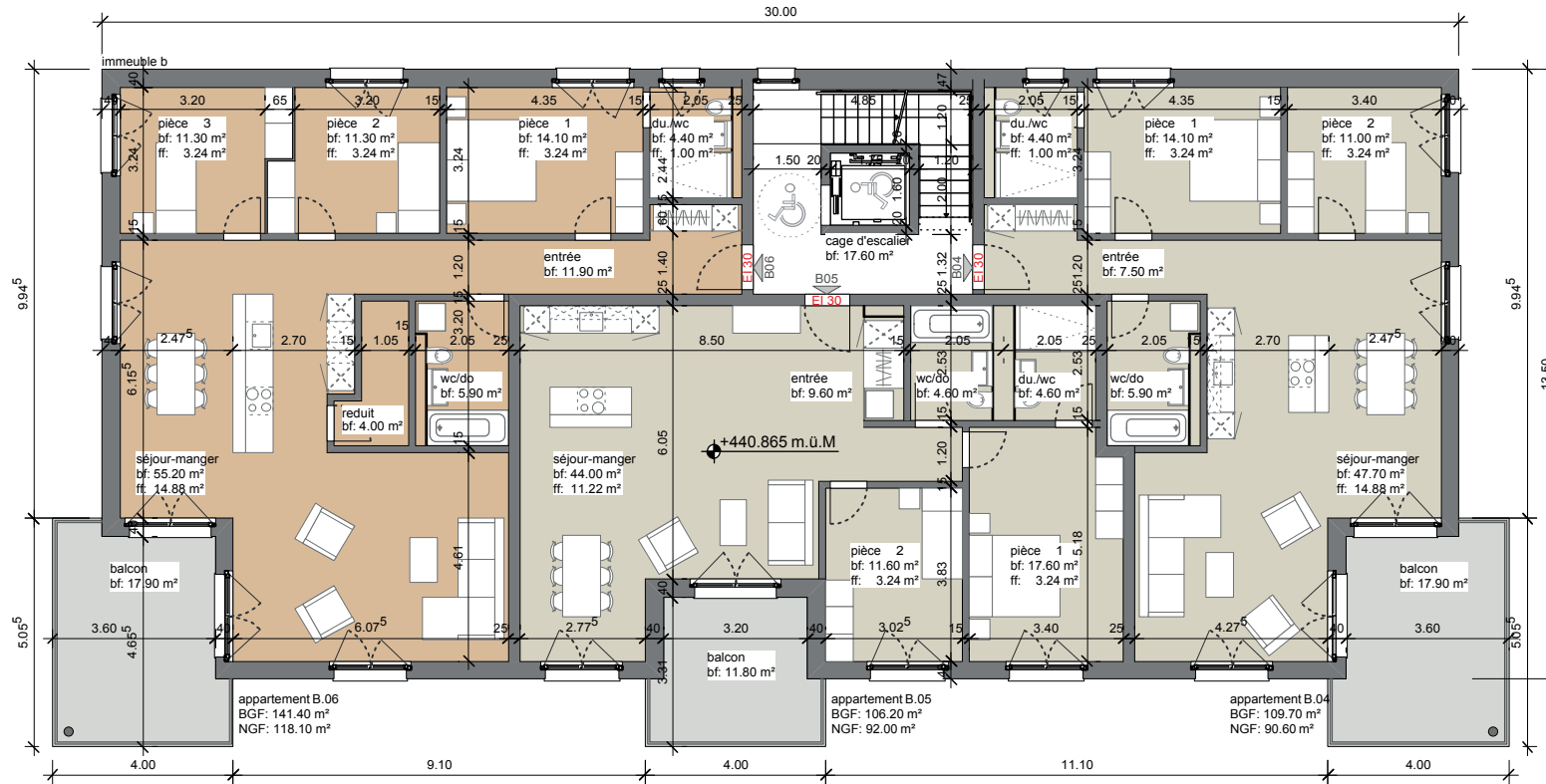


- 4.5 pcs.
- 3.5 pcs.

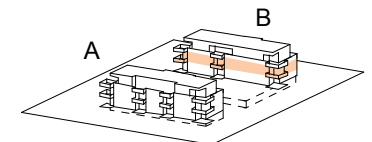
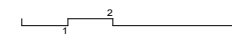


Toutes les indications sont sans engagement

# Immeuble B étage supérieur

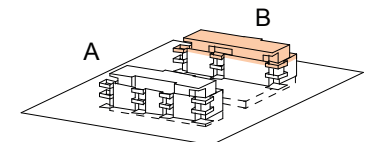
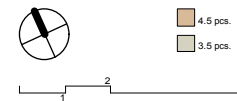
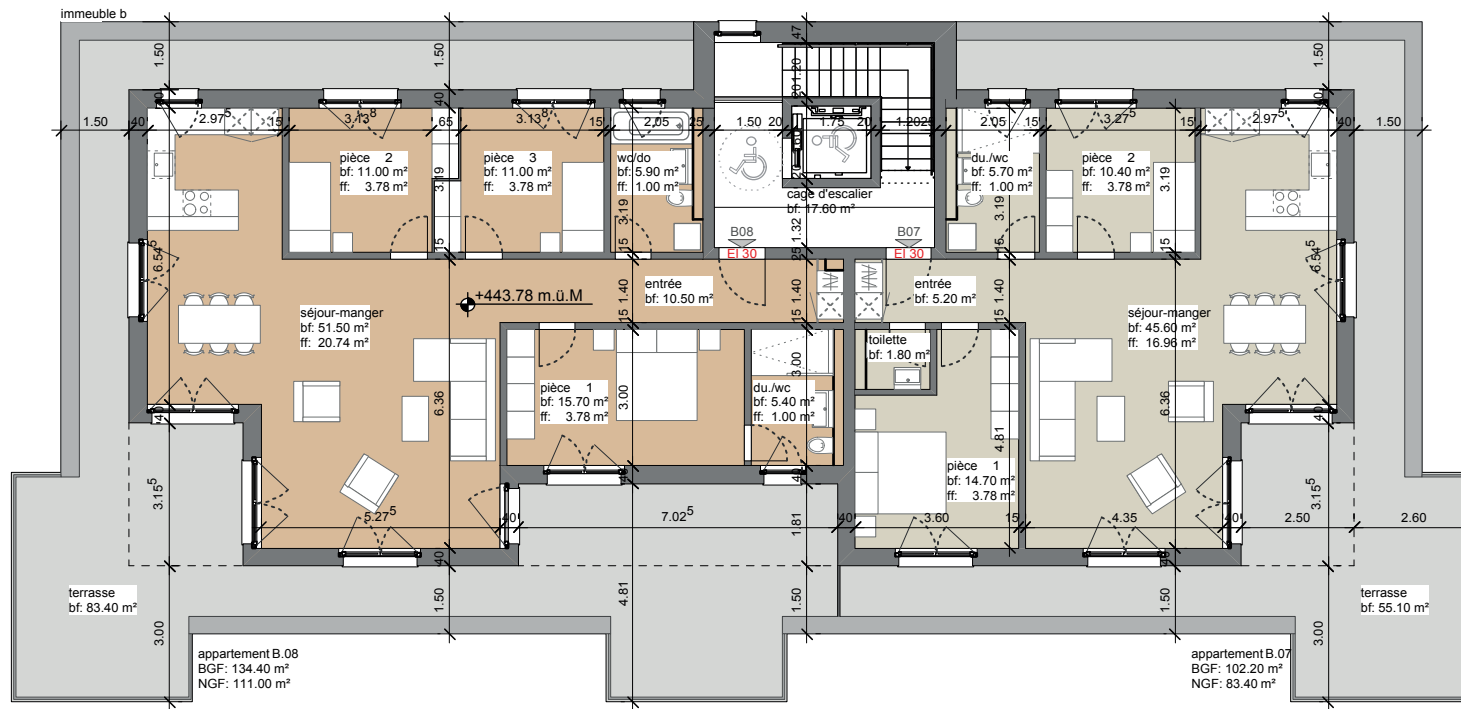


- 4.5 pcs.
- 3.5 pcs.



Toutes les indications sont sans engagement

# Immeuble B étage attique



Toutes les indications sont sans engagement